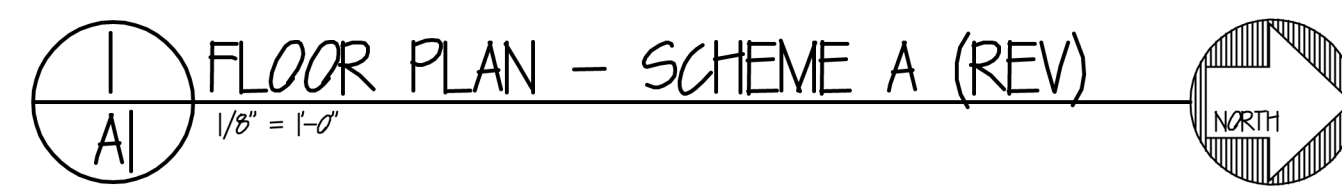


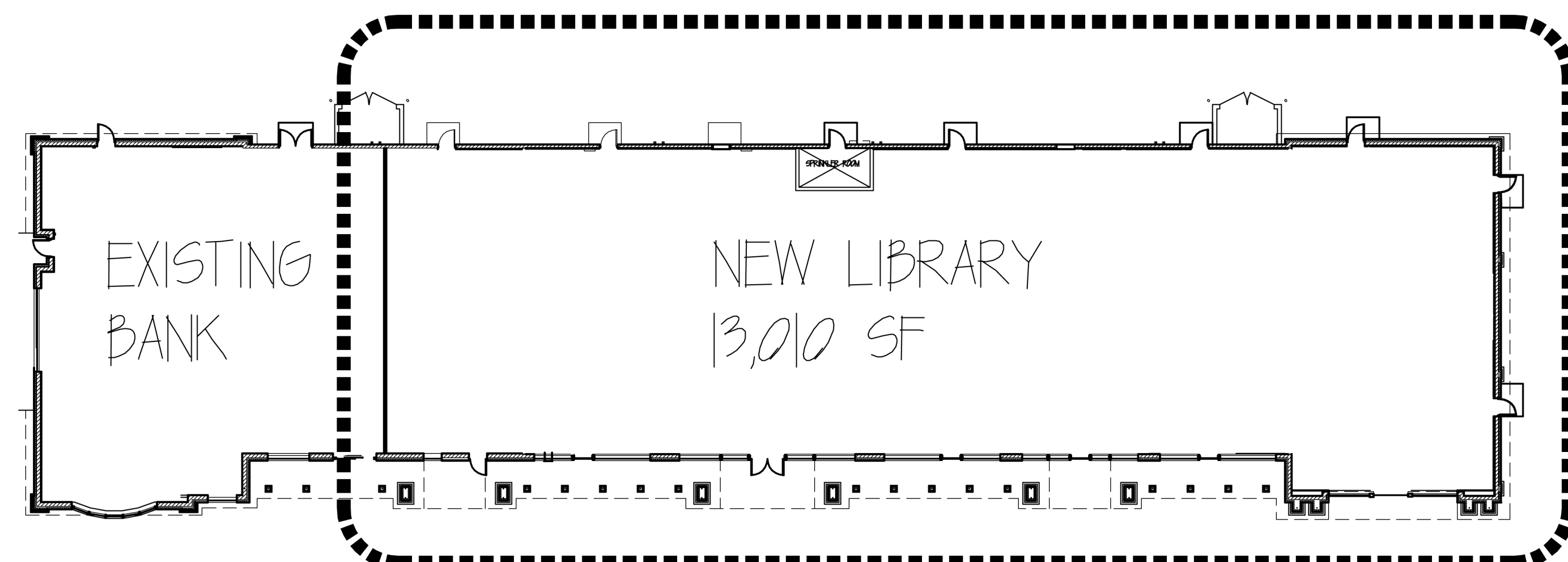
**STACK DATA**

- ADULT SERVICES STACKS = 152 @ 3'-0" x 12"
- TEEN STACKS = 35 @ 3'-0" x 12"
- JUVENILE STACKS = 30 @ 3'-0" x 12"
- PRESCHOOL STACKS = 56 @ 3'-0" x 12"
- SHARED MEDIA STACKS = 60 @ 3'-0" x 12"
- PERIODICALS = 5 @ 3'-0" x 12"
- CIRCULATION (WORK) = 10 @ 3'-0" x 12"
- CIRCULATION (DISPLAY) = 6 @ 3'-0" x 12"



**LIBRARY USE**

- FIRST FLOOR = 12,200 SF
- SECOND FLOOR = 810 SF
- TOTAL SPACE = 13,010 SF



© COPYRIGHT 2011 OLIVERI BROTHERS  
 SHEET NO. AI  
 FILE: R:\ARCH\1025\1025.PDF/P1  
 JOB NO. 1025  
 SCALE: 1/8" = 1'-0"  
 DRAWN BY: CLM  
 CHECKED BY: CLM  
 REVISIONS:  
 NO. DATE REVISIONS:  
 0 11/15/11 DRAWING START DATE  
 1 11/28/11 PER OWNER COMMENTS  
 2 11/28/11 PER OWNER COMMENTS  
 INTERIOR RENOVATION  
 MANHATTAN STATION RETAIL MALL  
 MANHATTAN, IL  
**OLIVERI BROTHERS inc.**  
 ARCHITECTS  
 (815) 469-6400